



Dear Parents,
 For Children in Need we are having a non-uniform and bad hair day on Friday 14th November. Could all children please bring 50p/£1 to donate to Children in Need if they want to participate in this event.
 Yours Sincerely,
Ramisa
 School Council Chair Person

Volume 6 Issue 2

November 2008



Grange Farm Primary School

NEWSLETTER

Dear Parents,



Friends of Grange Farm
Family Christmas Disco
Friday 28th November
At Grange Farm School
£6 per family or £2.50 per adult and
£1 per child.

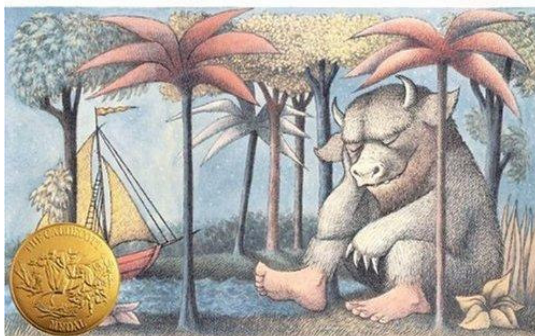
Fun for Fathers

Our first "Fun for Fathers" session was held at the school on Wednesday 1 October. The event was a great success and was very well attended. Indeed resources intended for use with two schools were all used up during the one session!

Our next session will take place on Wednesday 26th November between 5.30pm and 7.30pm and will be based on the book "Where the Wild Things Are".

The sessions are an opportunity for fathers or indeed any male carers to learn together with their children.

WHERE THE WILD THINGS ARE



STORY AND PICTURES BY MAURICE SENDAK

Christmas Production



Reception, Years 1 and 2

Tuesday 9 December-6.30pm **Tickets Only**

Wednesday 10 December-2.30pm **No Tickets Required**

Years 3,4 and 5

Tuesday 9 December-2.30pm **No Tickets Required**

Wednesday 10 December-6.30pm **Tickets Only**

Our children and staff will soon be busy learning songs, rehearsing lines and preparing costumes and effects in readiness for our Christmas Concerts.

With so much work and effort going into the productions we would hope that all children will be able to take part in both performances.

Your child's class teacher will be in contact with you in due course to inform you of the time that your children will need to arrive for the evening performance. You will also be informed of the time that they will need to be collected.

Tickets for the evening performances will be available from Monday 1 December.

Unfortunately, due to the halls limited capacity coupled with an anticipated high demand, tickets will be relatively scarce.

This means that in the first instance each family will be limited to a total of two tickets, two for each evening if you have children in both Key Stages.

Entrance to the evening performance will be strictly by ticket only. We would also ask that young children do not attend in the evening unless you have allocated a ticket to them.

It is also worth noting that there are no entrance restrictions to the afternoon performances.

Newsletter

Grange Farm Primary School
Dewsbury Avenue
Coventry
CV3 6NF

Phone: 024 7641 1098
Fax: 024 7641 7150
Email: headteacher@grangefarm.coventry.sch.uk



Late Arrivals

Teaching staff continue to express real concern that some children are regularly coming in to school late. This can be very disruptive as it impacts heavily on the start of lessons for all children. I would be grateful therefore if parents would make every effort to ensure that children are in school at 8.50 am for an 8.55 am start to the school day.

Snowline

Parents should be aware that in the unlikely event of school closure due to heavy snowfall, announcements detailing the situation will be made over the following local radio stations.

BBC Coventry and Warwickshire

Mercia FM

Touch FM

Heart FM

Information about school closures can also be found on the City Council website.

Music Concert

The recent music workshops and concert supported by pupils in Y5 and Y6 raised over £800 in aid of street children in Bolivia.

Training Day Date Change

Could all parents please note that the school closure day scheduled for Thursday 11 June will not now go ahead. This was suggested as the most likely date for elections and as the school is used as a polling station the day was designated as a teacher training day.

Coventry City Council have just informed us that the elections are now due to take place on Thursday 4 June.

Grange Farm School therefore will now be open for all pupils as normal on Thursday 11 June 2008. However the school will be closed for all pupils on Thursday 4 June 2008.



Dick Whittington!

The Friends of Grange Farm School have arranged for all our pupils to have the opportunity of attending this years production of Dick Whittington at the newly refurbished Belgrade Theatre.

Tickets have been booked for the mornings of Tuesday 9th December 2008 for Key Stage 1 and Wednesday 10th December 2008 for Key Stage 2. Admission to the theatre and all transport costs are being paid for by the Friends of Grange Farm School. As in the case of any school trip children will be accompanied to the theatre by our teaching staff.

Detailed information for parents will follow.

I would like to thank The Friends for their work on behalf of the school and its pupils and thank them for their support in this generous and ambitious undertaking.

Staffing

Congratulations must go to Mrs Jasminder Sahota who has been appointed to the position of Acting Deputy Headteacher at Grange Farm for the remainder of this academic year.

Water Bottles

New sink units have been installed in our Key Stage 1 classrooms together with replacement filter taps. These taps have a carbon filter and are designed to allow easy filling of childrens water bottles.

Children have access to their water bottles throughout the day and it would be great to see all our children bringing them into school. As well as the obvious health benefits research shows us that good hydration improves mental alertness.

Only water should be brought into school.

Ben Whelan

November 2008